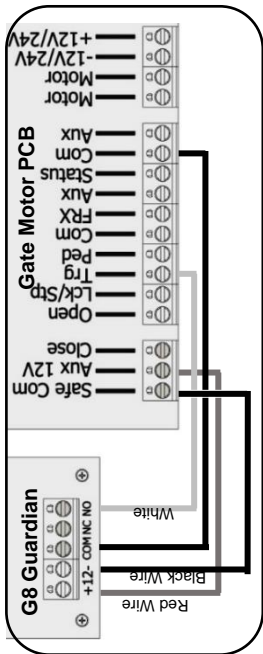


#### STEP 4: Wiring



#### STEP 4 continued

Remove power from the gate motor and disconnect the battery.

Using a black conducting wire, connect the Safe Com on the Gate motor PC board to the negative terminal of the G8GUARDIAN.

Run a red wire from the Aux 12V/+12V supply to the positive terminal of the G8GUARDIAN. Using black wire connect the Com of the gate motor PC board to the Com of the G8GUARDIAN.

Finally using a different colour wire, connect the Trg/TRIG of the gate motor PC board to the NO terminal of the G8GUARDIAN.

#### STEP 5: Check Connectivity

Switch power supply of the gate motor on, G8GUARDIAN should indicate power status (flashing red) and network status.

Network Status LED:

Solid green is a good signal strength.

Flashing green means a low signal strength.

Orange means the modem is starting up and PIN was OK - busy registering on the network.

Solid RED means there is a critical fault - (SIM is not present or locked/incorrect pin - switch off power immediately and check SIM)

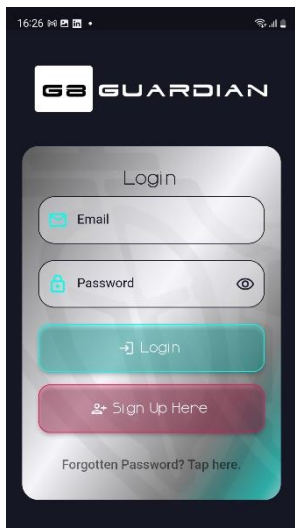
#### STEP 6: App Set Up

Download the G8GUARDIAN app from the play store or from the app store.



#### STEP 7: Create an Account

Open the app and tap on Sign up Here on the Login Screen.



#### STEP 8: Set up Device via App

Once you have signed up, login into your account.



Tap on the What to do Next button and follow the process.

All the basic programming functions can be done through the app.

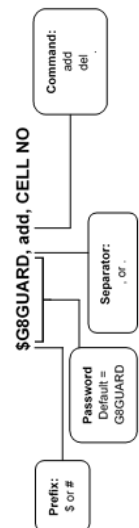
The app can add users, delete users and activate your G8GUARDIAN.

The G8GUARDIAN is programmed via SMS which the app does automatically for you during the setup process however all SMS messages that the app creates must be sent in order to program the G8GUARDIAN.

For more advanced SMS programming options or to use the G8GUARDIAN without the G8GUARDIAN app, continue to step 9.

#### STEP 9: Programming for Missed Call Activation.

Message Structure:



#### STEP 9 continued

To register a cell phone number into the G8GUARDIAN one will need to SMS the following command

**\$G8GUARD,add,CELL NO**

to the cell phone number of the sim card that has been installed into the G8GUARDIAN.

**For example, to add the first user with cell phone number 078-539-5394 the following SMS must be sent:**

**\$G8GUARD,add,0785935934**

Repeat the above process to add an additional user to the G8GUARDIAN. The G8GUARDIAN will be allocated user numbers in the order in which they are programmed.

#### STEP 9 continued

**For example, the first number added to the G8GUARDIAN will be user 1, the second number added will be user 2 and so on. Note the G8GUARDIAN can store up to 10 unique cell phone numbers.**

To Add/Replace a cell phone number of a particular user one will need to SMS the following command

**\$G8GUARD,N,add,CELL NO**

where N stands for the user number 1 to 10.

**For example, to add or replace user number 5 with cell phone number 078-593-5934 the following SMS must sent, \$G8GUARD,5,add,0785935934.**

#### STEP 9 continued

To delete a number off the G8GUARDIAN simply SMS **\$G8GUARD,del,N** where N = user number.

To change the device password, one will need to SMS the following command

**\$G8GUARD,pwd,G8GUARD, NEWPASSWORD.**

**For example, to change the default password to the new password say "HAPPY123" the following SMS must be sent \$G8GUARD,pwd,G8GUARD,HAPPY123. Note the new password must be between 6 and 10 characters long.**

**It is highly recommended that the default password be changed during programming and recorded.**

## Step 10: Programming for SMS functions.

The G8GUARDIAN also allows for several SMS commands where either registered or non-registered cell phone numbers can perform select functions, please see list below:

Command	Description	Example using registered phone number	Example if phone number is not registered with default password
on	Turns relay on	on	\$G8GUARD,on
off	Turns relay off	off	\$G8GUARD,off
toggle	Turns the relay into the opposite state it is in	toggle	\$G8GUARD,toggle
pulse	Will pulse for 1 second	pulse	\$G8GUARD,pulse
activate	Will perform the default action as programmed into the unit (factory shipped is pulse)	activate	\$G8GUARD,activate
ussd?	Will attempt to run USSD code and SMS back the result	ussd?,*136#	\$G8GUARD, ussd?,*136#
add	Will add the phone number at the first open spot	add,0851234567	\$G8GUARD, add,0851234567
add	Will add/overwrite the phone number at the specified index (1 to 10)	add,1,0851234567	\$G8GUARD, add,1,0851234567
del	Will remove the phone number at the specified index (1 to 10)	del,1	\$G8GUARD,del,1
info?	Will get the firmware version, signal strength, mode, and lock status	info?	\$G8GUARD,info?
sim pin	Will set the pin for the device to use on the SIM	sim pin,1234	\$G8GUARD,sim pin,1234
pin enable	Will enable the PIN on the SIM card. NB – the pin must be correct for this to work	pin enable	\$G8GUARD,pin enable
pwd	Change password – passwords are case sensitive.	pwd,G8GUARD,NEWPSWRD ( Max password length is 10 characters. Old password first, new password second)	\$G8GUARD, pwd,G8GUARD,NEWPSWRD
name	Change name of device	name,NEW NAME ( maximum of 20 characters. This is used in SMS reply.)	\$G8GUARD,name,NEW NAME
mode	Change output mode. Value: pulse, latch low, latch high, toggle.	mode,toggle mode,latch low mode,latch high mode,pulse	\$G8GUARD,mode,toggle \$G8GUARD,mode,latch low \$G8GUARD,mode,latch high \$G8GUARD,mode,pulse
list?	Will return list of programmed numbers and user numbers.	list?	\$G8GUARD,list?
Lock users	Will not allow any additional user to be added.	Lock users (must be sent twice consecutively. Can only be unlocked with onsite configuration software).	\$G8GUARD,lock users (must be sent twice consecutively)
Lock SMS	Will not respond to SMS commands except for ussd?, info?, list?	Lock SMS (lock users must first be active. Can only be unlocked with onsite configuration software)	\$G8GUARD,lock SMS (lock users must first be active).

## G8 GUARDIAN

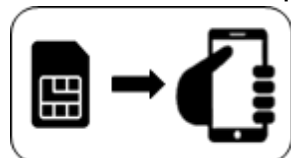


## INSTALLATION MANUAL

### Congratulations

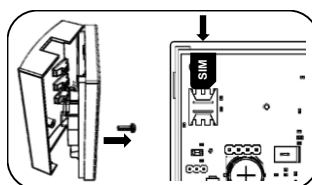
you are now a proud owner of a G8 Guardian, premium remote relay control technology. Thank you for your support and welcome to the G8GUARDIAN family.

### STEP 1: Sim Card PIN Setup



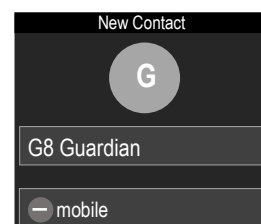
Make sure that the sim card that will be installed into the G8GUARDIAN has sim pin **DISABLED** or set to **0000** before installing it in the G8GUARDIAN. This can be done by installing the sim card into a cell phone and removing sim pin or setting it to **0000**.

### STEP 2: Sim Card Installation



Once the sim pin has been removed or changed to 0000, remove the lid of the G8GUARDIAN unit. Insert the sim card into the sim card holder.

### STEP 3: Save Number



Make sure you add the cell phone number of the sim card inserted into the G8GUARDIAN to your phone contacts. You can use the contact name "G8 Guardian".